

sensIQ

EVO Anthracite

EAN 4007841 056636

Article number 056636



infrared sensor 3 x
100°



3 zones scalable
2-20m

2500 W

2500 W max.



IP54



2 - 2000 lux



5 sec - 15 min



ideal 2 - 5 m



energy saving

5 years

manufacturer's
warranty steinel-
professional.de/
garantie



CE

Function description

King of the infrared motion detectors. The revolutionary sensIQ for indoors and out, ideal for building entrances, loading bays, installation height up to 5 m, quadruple sensor system for optimum coverage over a 300° detection angle, 20 m range (tangential), metre-precision reach setting in 3 different directions, heavy-duty relay for high switching capacity. Remote control and corner wall mount bracket included.

Technical specifications

Dimensions (L x W x H)	172 x 113 x 144 mm
With motion detector	Yes
Manufacturer's Warranty	5 years
Settings via	Remote control, Potentiometers, Smart Remote
With remote control	Yes
Version	Anthracite
PU1, EAN	4007841056636
Type	Motion detectors
Application, place	Indoors, Outdoors
Application, room	multi-storey / underground car park, outdoors, warehouse, front door, all round the building, courtyard & driveway, Indoors
Colour	Anthracite
Colour, RAL	7016
Includes corner wall mount	Yes
Installation site	wall, ceiling, corner

LED lamps > 8 W	500 W
Capacitive load in µF	176 µF
Technology, sensors	passive infrared, Light sensor
Mounting height	2,00 – 5,00 m
Mounting height max.	5,00 m
Optimum mounting height	2 m
Detection angle	300 °
Angle of aperture	180 °
Sneak-by guard	Yes
Capability of masking out individual segments	Yes
Electronic scalability	No
Mechanical scalability	Yes
Reach, radial	r = 4 m (42 m²)
Reach, tangential	r = 20 m (1047 m²)
Switching zones	1360 switching zones

Technical specifications

Installation	Surface wiring, Wall, Ceiling, corner
IP-rating	IP54
Ambient temperature	from -20 up to 50 °C
Material	Plastic
Mains power supply	230 V / 50 – 60 Hz
Switching output 1, number of LEDs / fluorescent lamps	50 pcs.
Switching output 1, floating	No
Fluorescent lamps, electronic ballast	500 W
Fluorescent lamps, series-corrected	1800 VA
Fluorescent lamps, parallel-corrected	500 VA
LED lamps < 2 W	100 W
LED lamps > 2 W < 8 W	250 W

Functions	Normal / test mode, Manual ON / ON-OFF
Twilight setting	2 – 2000 lx
Time setting	5 s – 15 Min.
Basic light level function	No
Main light adjustable	No
Twilight setting TEACH	Yes
Constant-lighting control	No
Interconnection	Yes
Type of interconnection	Master/master
Interconnection via	Cable
Product category	Motion detector

Accessories

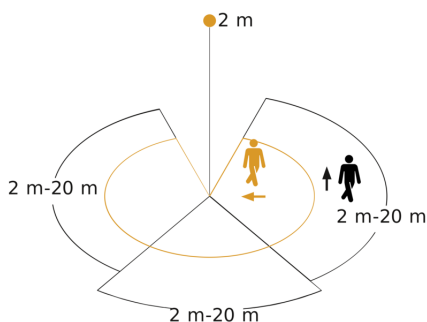
EAN 4007841 009151

Remote control Smart Remote

EAN 4007841 007638

Remote control RC9

Detection Zone



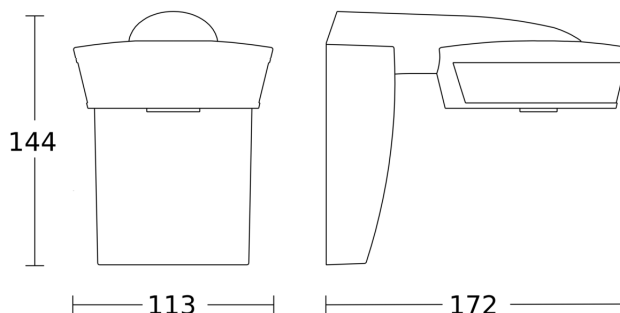
Possible mounting height: 2,00 m - 5,00 m

Orange: radial

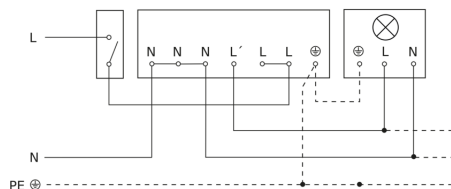
Black: tangential

3 scalable zones

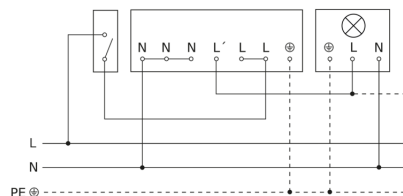
Dimension Drawing



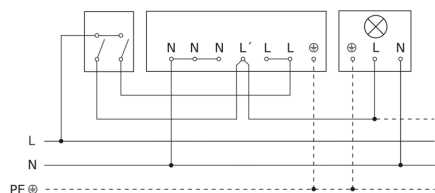
Light without neutral conductor



Light with neutral conductor



Connection using two-circuit switch for manual and automatic operation



Connection of 4-fold push-button coupler to DALI2 APC

